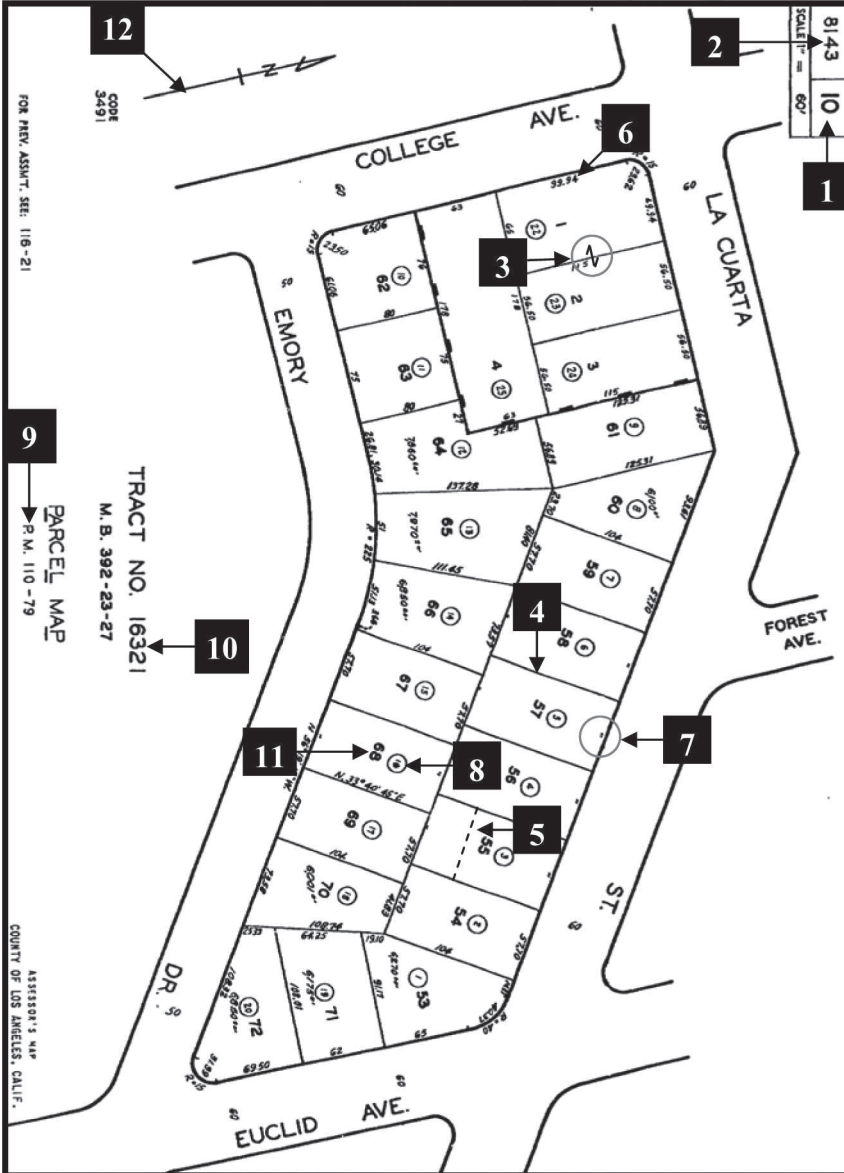
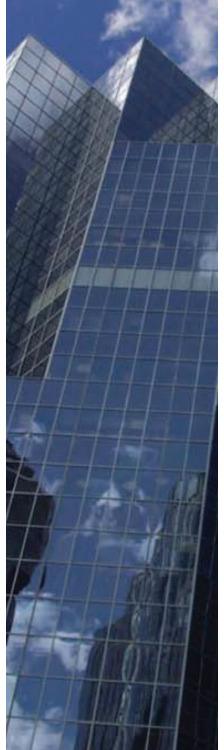




## HOW TO READ A PLAT MAP



- 1** Assessor's page number
- 2** Assessor's book number
- 3** Tie Line may indicate that two or more record lots, or partitions of record lots, are assessed as one assessor's parcel.
- 4** Lot Line (solid line)
- 5** Tax Parcel Line (dotted line)
- 6** Approximate lot dimensions in feet
- 7** Ditto Mark indicates lot dimensions are equal to adjoining lot
- 8** Parcel number assigned to the specific lot(s)
- 9** Abbreviated Tract Map filing reference. Read: "Filed in Book 110, Page 79 of maps in the office of the County Recorder of said country."
- 10** Recorded Tract Number
- 11** Recorded Lot Number
- 12** Compass indicator



The Assessor's Map is not filed with the official County's Records. This map is based upon tract maps that are filed with the local County records. The Assessor will include a reference to the maps that have been filed at the County.

**"Your Partners In Success"**



**CONSUMER'S TITLE COMPANY**  
of SOUTHERN CALIFORNIA

[www.ctsocal.com](http://www.ctsocal.com)

Office: 805.495.7200 • Fax: 805.495.1774

4035 E. Thousand Oaks Blvd. #260 • Westlake Village, CA 91362